

INSTALLATION GUIDE LINE

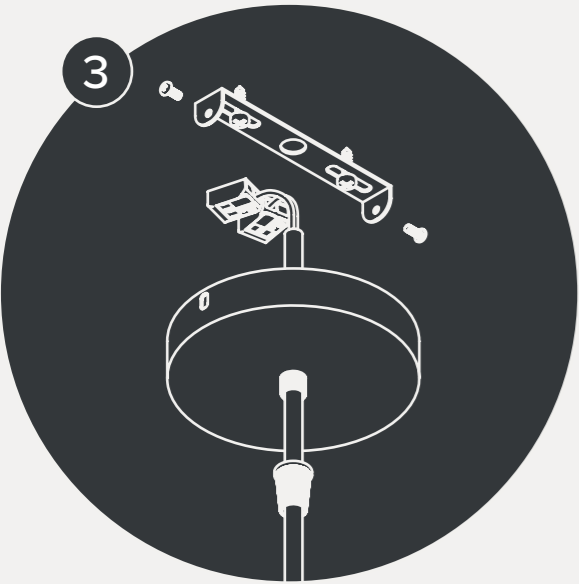
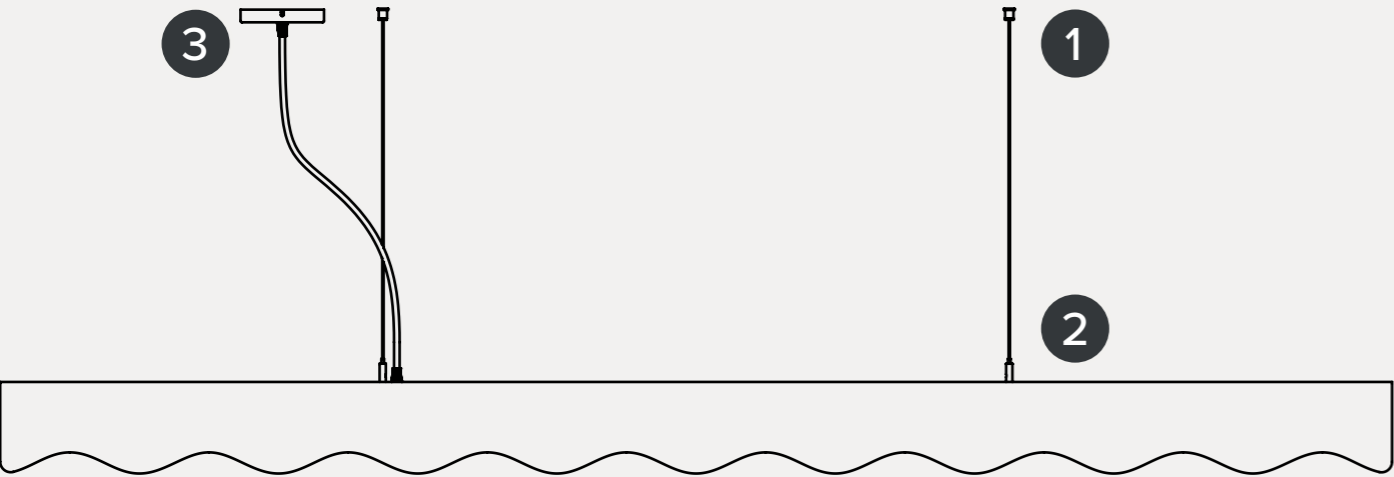
/ STANDARD INSTALLATION

PART 1 

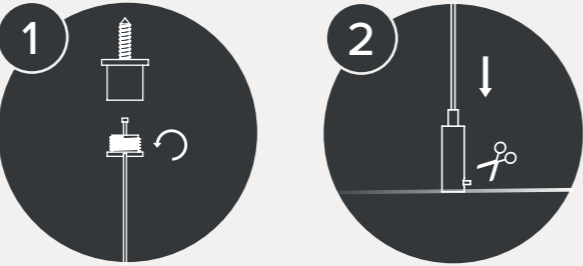
PART 2 

IMPORTANT: Turn off the power before installation.

- Step 1: Mount part 1 for the steel wires to the ceiling. Use wall plugs if necessary.
- Step 2: Feed the steel wires through part 2 and fasten them to part 1.
- Step 3: Hang the lamp on the steel wires and adjust it to the desired height.
- Step 4: Cut off the excess steel wire. Leave a small extra length in case future adjustment is needed.
- Step 5: Mount the ceiling rose bracket to the ceiling.
- Step 6: Adjust the power cable to the correct length and trim if necessary.
- Step 7: Attach the ceiling rose to the bracket.



/ Architectural ceiling



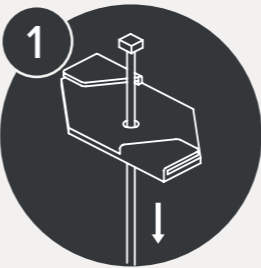
/ CONNECT WITH APP

- 1 Download and install the TUYA Smart app.
- 2 Connect the app to your home Wi-Fi network.
- 3 Turn the lamp on and off 3–6 times until the light starts flashing (pairing mode).
- 4 Open the app and tap the “+” button in the top-right corner.
- 5 Add the device. The lamp will only appear when it is in pairing mode.

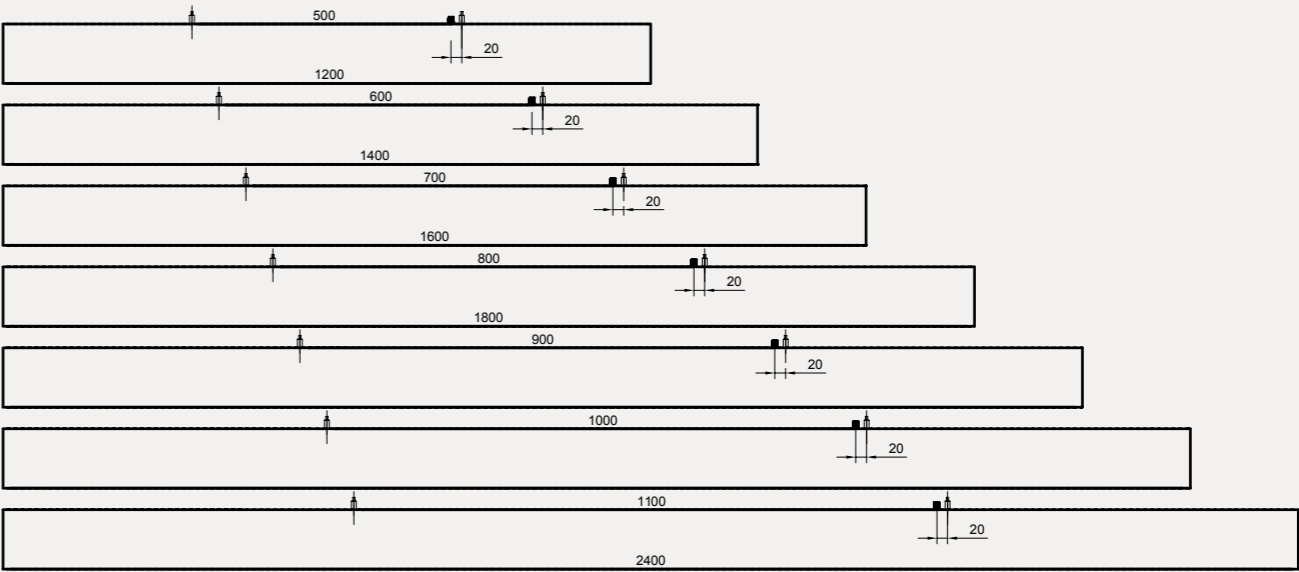
/ OTHER INSTALLATION OPTIONS



/ Suspended ceiling



/ Plug



/ IMPORTANT SAFETY INSTRUCTIONS

Please read this instruction manual carefully before installing the fixture and keep it for future reference. If you are not experienced in installing lighting fixtures, we recommend consulting a qualified electrician.

Warning:
The instructions in this manual do not cover all possible situations. Always use common sense and caution during installation and use.

- Safety Instructions**
- Do not install the fixture in hazardous locations or in direct sunlight.
 - Keep a minimum distance of 20 cm from curtains or other flammable materials.
 - Risk of fire and electric shock.
 - Wear appropriate protective equipment during installation.
 - Ensure the mounting surface and hardware can safely support the weight of the fixture.
 - Check all wiring for damage before installation and replace if necessary.

IMPORTANT! Turn off the power at the circuit breaker before installation. Always use a voltage tester to confirm the power is off. Do not rely on the light switch alone.